

Photosynthesis

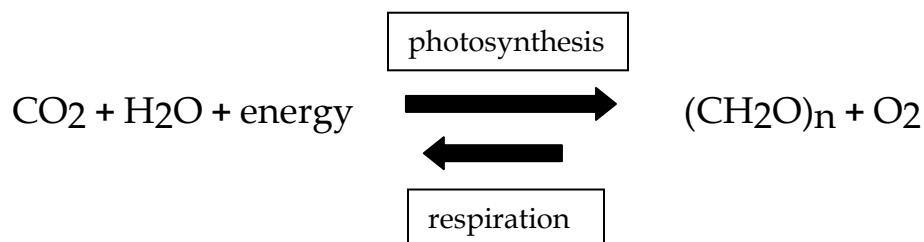
Learning Goals

After completing this laboratory exercise you will be able to:

1. Observe the absorption spectrum of the pigment Chlorophyll using a spectroscope.
2. Describe the relationship between photosynthetic rate and light intensity.
3. Discuss the effectiveness of various colors of light for photosynthesis.

Introduction

Photosynthesis is the process whereby the radiant energy of the sun is converted into chemical potential energy of organic molecules. This process is responsible for present life on this planet - it provides food, and therefore the energy source for nearly all living things. The utilization of light energy as an energy source is found only in certain photosynthetic organisms; a few bacteria, some protists, and, of course, plants. Plants, in addition to their formation of high-energy foodstuffs from light energy, water, and carbon dioxide, also produce oxygen, a gas essential for our life. In today's experiments you will measure the formation of this "waste product" of plants using a metabolism chamber with gas sensors. The equation :



can be used to represent the equation for photosynthesis when read from left to right or for respiration when read from right to left. The two processes have many similarities in their details but differ fundamentally in that respiration is a way of getting useful energy *out of* organic molecules $(\text{CH}_2\text{O})_n$ while photosynthesis is a way of putting energy *into* organic molecules for storage. Respiration occurs mainly in mitochondria in the cell, photosynthesis in chloroplasts. Plant cells may be respiring and photosynthesizing at the same time. Animals are dependent upon the photosynthetic activity of plants and only respire.

At least three factors limit the rate of photosynthesis: temperature, light intensity and CO_2 concentration. At the biochemical level, water ordinarily does not limit the rate of photosynthesis. Why? For light to be used, it must be absorbed by a pigment. A pigment reflects some colors of light and absorbs other wavelengths of light. It is the energy that is absorbed by the pigment, which is useful biologically. Chlorophyll is the pigment involved directly in photosynthesis. It reflects green light, which is why it

looks green, and absorbs at the red and blue ends of the spectrum. Other pigments in plants absorb other wavelengths of light and, though they don't participate directly in the photosynthetic reaction, they can apparently pass on the energy gained to chlorophyll molecules. Thus these accessory pigments are also important in photosynthesis.

Demonstration of Light Absorption by Pigments.

(Demonstration by Laboratory Instructor) Light that is a mixture of all the wavelengths we can see, appears white to us. A spectroscope separates light of different wavelengths into a spectrum. View the white light of a tungsten lamp through the spectroscope. Make a sketch of the spectrum. Solutions of leaf pigments which have been extracted and separated are available next to the spectroscope. Now place the solution containing the pigment between light source and spectroscope. Hold the tube in place, view and make a sketch of the new spectrum. Are there any bands of color missing from the original spectrum? These are absorption bands. Where are these bands located? What conclusions can you make regarding the visible color of a pigment and the color of light it absorbs?

The light absorbed by chlorophyll in an intact leaf is used to drive the chemical reaction shown previously. That is, light energy is converted to chemical energy. This conversion requires an assemblage of enzymes and other substances built into the chloroplast. When chlorophyll has been extracted into solution, it still absorbs light, but the energy cannot be captured as chemical energy. The light absorbed by the chlorophyll is re-emitted as light of a longer wavelength. This is called fluorescence. Hold a tube of chlorophyll extract so that bright light enters from its side with respect to you, and you will see its fluorescence. What color is the re-emitted light?

You may use this property of fluorescence to determine the absorption spectrum of a particular pigment molecule. Note that before a molecule that fluoresces can fluoresce light, it must first absorb light.

1. Place a colored filter between the light source and the pigment sample. Does the sample still fluoresce? If so, give it a relative rating such as +5 .
2. Now try another color and record its relative fluorescence response on the illuminated sample.
3. Continue with your measurements of "relative" fluorescence emission and the color of light illuminating the sample until you have tried and "rated" every color filter available.
4. Draw a graph of your data with the relative fluorescence as the dependent variable and the color of light (Red, Orange, Yellow, Green, Blue, Violet, (ROYGBV) as the independent variable. This type of plot is called an absorption spectrum. (You should be aware that the concentration of

pigment in this sample was carefully controlled. Too little pigment, no visible fluorescence. Too much pigment, no fluorescence because of self absorption).

Experimentation: Measurement of Oxygen Evolution.

You will determine the effects of light intensity and light color on the photosynthetic rate of plants.

Materials and Methods.

You will observe respiration of a plant sample by placing it in the dark, photosynthesis in the presence of light, and the effect of specific ranges of wavelength (blue, green and red) on the rate of photosynthesis. You will use a light source and color filters (plastic) for selecting the color of illumination light and a metabolic chamber with gas sensors.

The metabolic chamber has both oxygen and carbon dioxide sensors to measure any change in the concentration of those gases in the presence of a plant specimen. The sensors are connected to a hub called *Lab Quest Mini* that connects to a computer and allows you to see and record in real time the measurement of oxygen in the chamber. This apparatus is sensitive and expensive, so please use caution when experimenting. The software you will use with this set up is called Logger Lite/Logger Pro; it will record data and create a graph while you experiment.

The oxygen sensor continually measures the oxygen concentration using a lead anode, a gold cathode, and an electrolytic solution which carries a current produced in proportion to the oxygen concentration, by the reduction of the oxygen molecules. The oxygen sensor must be kept upright or it will not work properly and could be damaged. It is the vertical sensor seen in the photo of your apparatus.

The carbon dioxide sensor is the horizontal sensor and uses infra-red emission to measure the gas concentration in the tube between one end of the sensor tube where the beam is generated and the other end where it is measured. The amount of infra-red reaching the sensor at the end of the tube is inversely proportional to the concentration of carbon dioxide because it is absorbed by carbon dioxide.

Respiration chamber, sensors and hub Illuminator and Respiration chamber Covered chamber with red filter



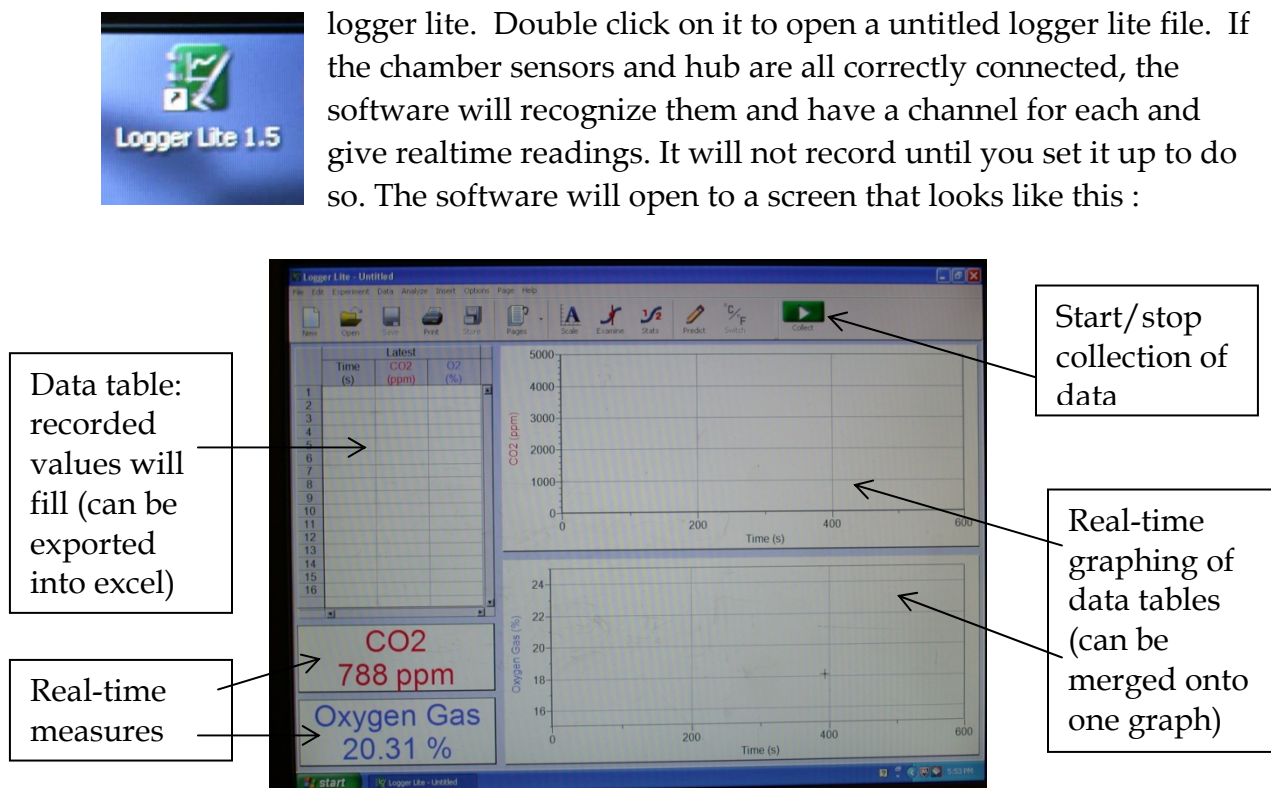
Part I. Light intensity and Photosynthesis

Experimental Procedure

A. Respiration rate measurement. (Plant samples ought to be in the dark respiring until a steady state is reached before recording respiration.)

1. The respiration chamber system should be turned on, attached to a computer and working properly. You will need to place a plant leaf inside of the chamber, check that the sensors are securely fitted so there are no leaks, then cover the unit while you set up the software. The leaves are covered so that they will be at a steady state of respiration upon the start of your experiment. Keep it covered while you acquaint yourself with the apparatus.

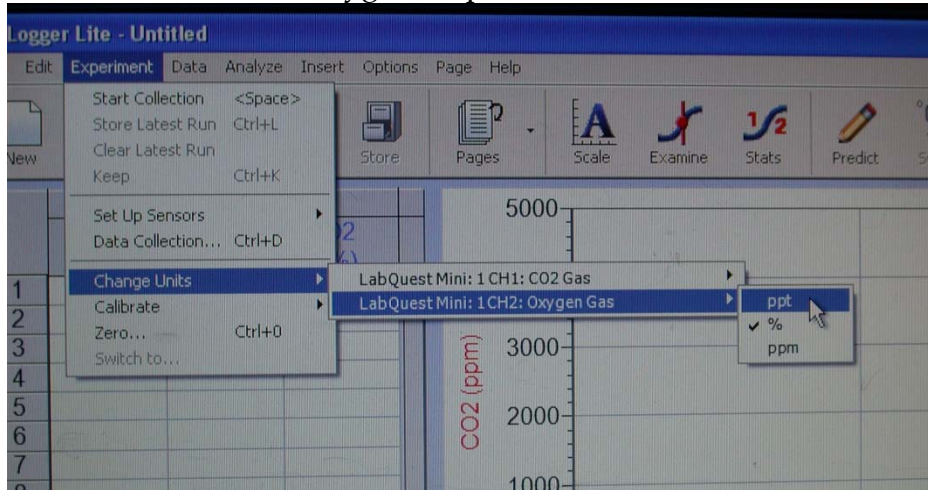
2. You will notice on the computer monitor there is software with a green icon called logger lite. Double click on it to open a untitled logger lite file. If the chamber sensors and hub are all correctly connected, the software will recognize them and have a channel for each and give realtime readings. It will not record until you set it up to do so. The software will open to a screen that looks like this :



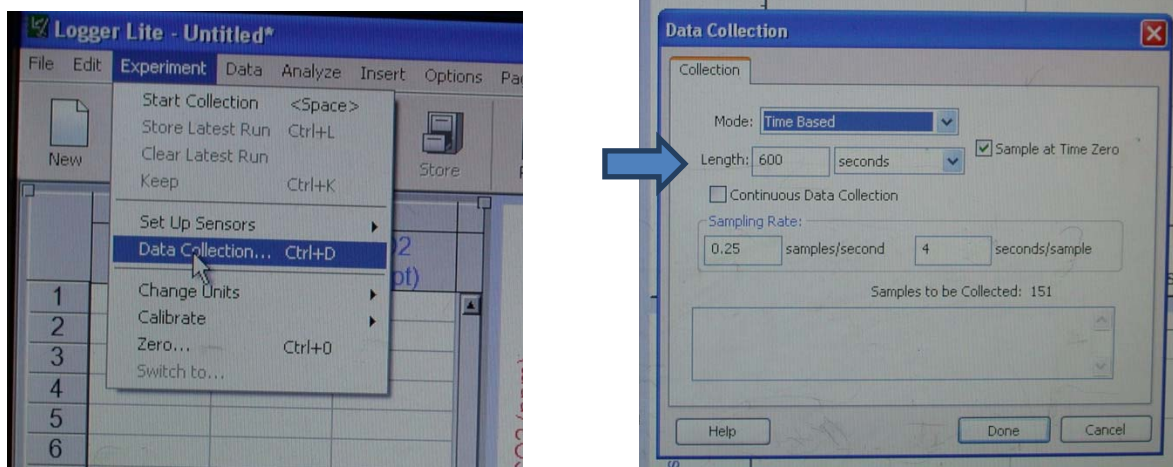
If you do not see both oxygen and carbon dioxide in the real-time measure boxes, they are not properly connected. Ask for assistance.

3. Now you will set the data collection units of oxygen to ppt and carbon dioxide to ppm. This will also acquaint you with the menu bar which you will revisit to save your data runs after each has been collected. To set up for data collection go to the menu bar and click on "Experiment". A drop down menu appears—you will see

“data collection” and “change units” listed among other things. Refer to the following image. Go to “**change units**” and you will see two channels listed as connected to the LabQuest Mini. Whichever channel the sensor is plugged is listed. Click on the one labeled Oxygen gas, and you will see three units listed: ppt, % and ppm (parts per thousand, percent and parts per million). Click on ppt and you will reset the oxygen unit to parts per thousand. Double check that it is so by looking into the real time measure box on the lower left screen—it should say ppt now instead of % after oxygen. Repeat for Carbon Dioxide but set it at ppm.

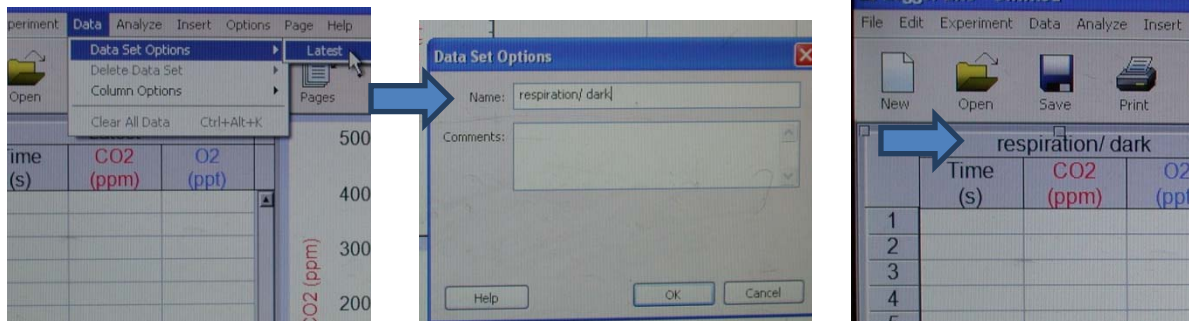


4. Similarly set up the data collection time limit by going to experiment, but click on “Data Collection...” and a new small window will open allowing you to change the length of seconds of data collection. Type in 900 seconds in order to collect 15 minutes of data. Then click “Done”.



5. Now you can also acquaint yourself with how to name and save each data run. The software will refer to your most recently collected data run as “Latest” until you

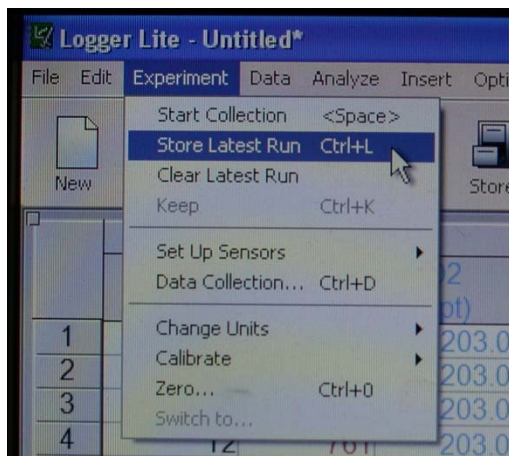
store it. When you store it will then be called Run 1, Run 2 chronologically until you change the name. To store and change the names of the runs go to the menu bar, or to name it from the start, click on “Data”. A drop down menu will give you choices. Click on “Data Set Options” and it will open a Data Set Options window where you can do just that. If you have data sets it will list them all if you want to rename them. Type in “respiration/dark” where it says “Name”, since you are starting with that first, click OK, and the name of the first run should appear in the Recording Data Table.



6. Now you are ready to begin your recording of respiration of your plant sample. Notice the green data “Collection” button on the top right portion of the logger lite file. Click on it, it turns red (data is collecting now) and data will start to fill in the table. Once it can begin to plot data points you will start to see it show up in the graphing box. Do not click on it if it is red and says stop unless you need to stop the run—it will run for the 900 seconds that you set it up to record for.



7. When it is done collecting you will know because the “Collect” button will be green again and **you will now store the data collection set**—this is important for each run and you must do it to keep them separate! (It is NOT the same as naming.) Go to “Experiment” and choose “Store Latest Run” to store it properly. Once you click on



that you will notice in the data table that a new run (called Latest) is now set up for collection, and if you scroll to the right within the data table you will see your recently recorded respiration data next to it. **This is very important to do after each run;** otherwise, if you start to collect data it

will pick up recording where it left off instead of creating a new line and mix up your work.

8. Now uncover your apparatus. The leaf ought to be in the far corner away from the CO₂ sensor and able to receive full illumination without interruption. Set up the illuminator so it shines on the leaf only and as fully as it can at the highest intensity setting (3) and as close as it can be. Start the data collection by clicking the green "Collect " button.



9. **As the data collects**, you should see a second line form on the same graph that the first run is on. Ask yourself if the respiration graph is what you expect and if the photosynthesis data is in the trend expected. Do you think the photosynthetic rate will be immediately apparent? Watch and determine what the steady rate of oxygen evolution is and if it is steady the entire time.
10. When the full illumination collection is over **cover** the apparatus so the leaf is reset to the dark/respiration state, so any photosynthesis activity can be cleared (do this between each run).
11. While resetting to the dark/respiration state takes place, **store** the full illumination data. Note that it is currently called "Latest" and once **stored** it will be called "Run 1" by the software (refer to step 7 for directions).
12. Once stored, rename "Run 1" *full illumination* (refer to step 5 for directions).

13. At this point you are ready for the next run. All runs in fact at this point will include repetition of the last steps (8-12) only with different light treatments. Refer to those steps for directions if you need them but basically each run will entail:

1-uncover

2-set up experimental treatment

3-collect data

4-cover apparatus after collection is over to reset to near respiration

5-store latest run

6-name stored run

7-set up for the experimental treatment

8-Repeat 1-7

It is the particulars of the remaining experimental treatment that we will now get into. When the entire experiment is over you must save the file, name it by day, lab time, and a name you will remember. Then transfer the file to your thumb drive or email it to yourself.

Treatments:

Collect oxygen and carbon dioxide data for the following treatments:

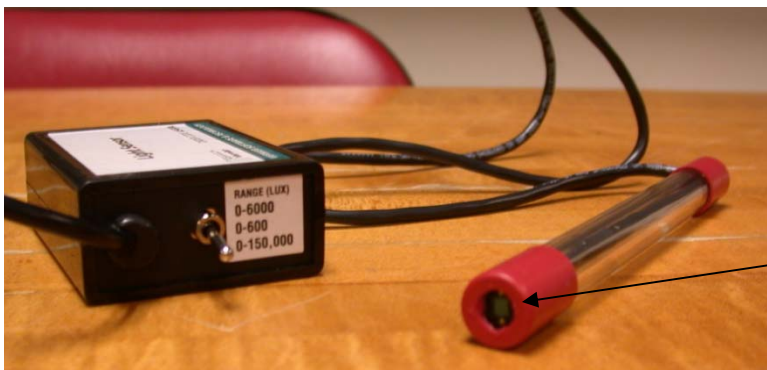
Distances/light intensities of 10cm, 5cm, 1cm

Red, green, blue filtered light

Part II. Light intensity and Photosynthesis

The inverse square law for light intensity expresses the relationship between light intensity and distance--intensity decreases as you move the source of light further away. The intensity is inversely proportional to the square of the distance from the source of the light. (Relative intensity = $1/d^2$.) You will observe this by simply measuring the intensity of light as it reaches a light sensor, it will record onto the same program.

Light sensor for measuring light intensity. (set to the highest setting 0-150,000 LUX)



The light sensor is located here and the light must hit this surface.

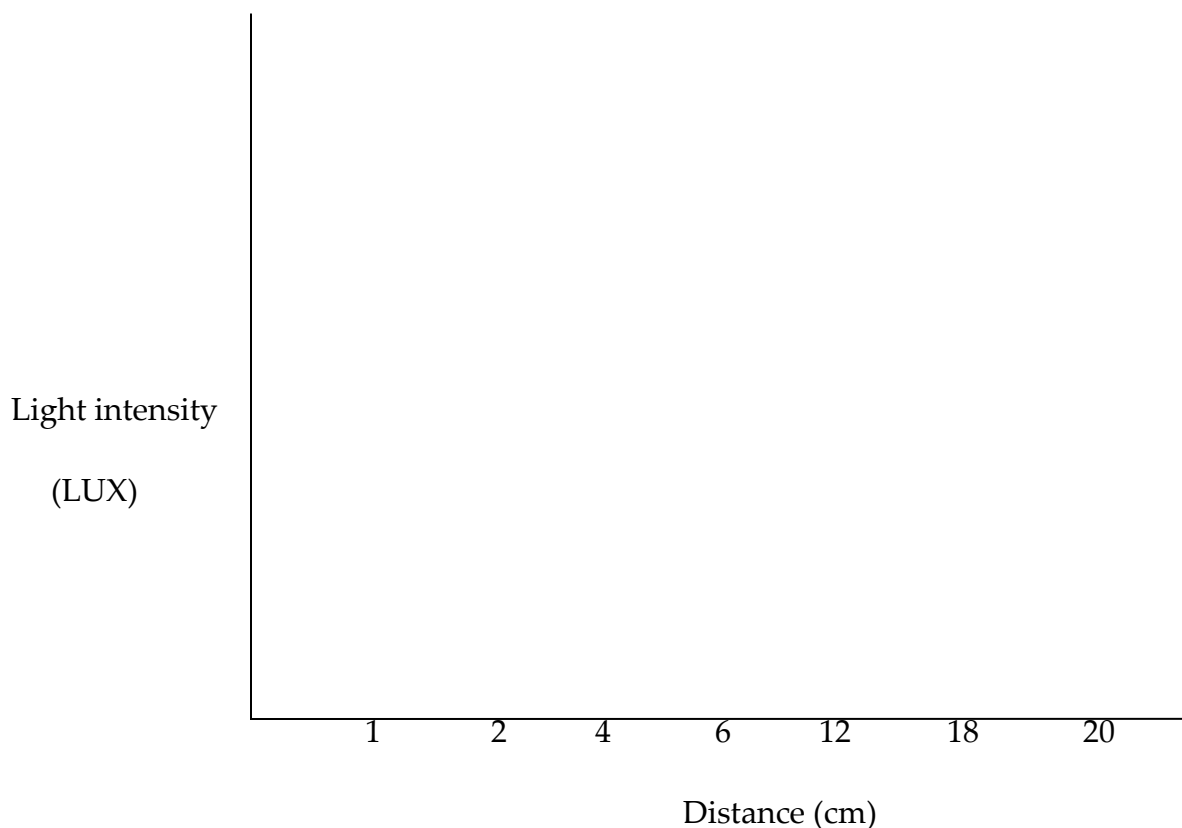
Notice the end of the light meter has a small square at the tip which is the actual sensor. You will want to illuminate that surface for 10 seconds of data recording at 1cm -10cm distances separated by 1cm.

For each distance, start the data collection, record for 10sec, stop the data collection, move the light and repeat at the new distance until they are all measured. Record an approximate intensity of light in LUX (luminous flux/unit area) at each distance in the table below, and plot the points with LUX on the Y-axis and distance on the X-axis later on. This provides a basis of information to you regarding how photosynthetic rate may vary with light intensity. Is it a linear relationship? (If you double distance is the intensity cut in half?)

Distance (cm)	20	18	12	6	4	2	1
Intensity LUX							

(1 LUX = 1 lumen/m² = 1 cd • sr/m²)

Sketch a quick graph :



Now, measure the photosynthetic rate for three different light intensities with a distance of 18cm, 6cm and 2cm. Monitor for 14 minutes per distance. Start your measurements with the lowest light intensity and furthest distance which is 10cm. Be sure to save and name each run.

Part III. Wavelength and Photosynthesis

- (1) Measure the rate of photosynthesis using the colored filters. The actual light intensity transmitted to the sample should be the same for each filter and the one intensity with the most effect on photosynthetic rate. Color filters are used to provide uniform illumination of specific wavelengths (colors) of light in the light quality experiments (crude action spectrum).
- (2) Start with the red filter and cover the sample chamber with it. Do this in such a way that when you illuminate the sample, the light path passes through the filter.
- (3) In between each filter treatment, cover the sample chamber with the respiration box for 6 minutes. This is to reduce any effect from the previous filter on the photosynthetic rate you are recording.
- (3) Repeat with the blue filter and finally with the green.

Modify your data table to determine rates

The data logger will have recorded the concentrations of oxygen and carbon dioxide at different time points over the course of your experiment. You now need to calculate *rates* of change—the changes in O₂ or CO₂ concentration per unit time. These rates can be calculated as follows:

Change in O₂ = (O₂-O₁) ppt

Change in Time = (T₂-T₁) seconds

Thus **RATE** will equal $\Delta O / \Delta T$ = ppt of oxygen per second

Change in CO₂ = ((CO₂)₂-(CO₂)₁) ppm

Change in Time = (T₂-T₁) seconds

Thus **RATE** will equal $\Delta O/\Delta T$ = ppm of carbon dioxide per second

Since the sensor readings will “wobble” a bit from time point to time point, it is best to use start and end points as widely spaced as possible—time points that bracket a steady, approximately linear region of the plot. (Note how the short term rate fluctuates from one time segment to the next in the sample spreadsheet shown below. Ask your TA to clarify this if needed.)

Sample Data. Columns C and E were created in a spreadsheet program. Note the fluctuation in rates from time point to time point. Use the most widely spaced time points possible for the best estimation of the rates.

A	B	C	D	E
Time (sec)	Oxygen ppt	Δ Oxygen (@T _n - @T _{n-1}) Rate $\Delta O/\Delta T$	Carbon Dioxide ppm	Δ Carbon Dioxide ppm (@T _n - @T _{n-1}) Rate $\Delta CO_2/\Delta T$
0	700	----	20,050	----
1	700	0 ppt/sec	20,051	1 ppm/sec
2	701	1	20,050	-1
3	701	0	20,049	1
4	702	1	20,049	0
5	703	1	20,048	-1
6	705	2	20,048	0
7	707	2	20,047	-1
8	709	2	20,046	-1
9	711	2	20,045	-1

Use your data for each light intensity and filter treatment to calculate the rates per sec.

Obtaining the true rate of photosynthesis

Since plant cells can respire and photosynthesize at the same time, the measured rates of change in O₂ or in CO₂ represent the net result of these two processes combined. To obtain accurate rates of photosynthesis, the respiration rate must be used to correct the measured rate of oxygen evolution in the light. Add the absolute value of the respiration rate to the measured rate of oxygen evolution in the light. (We will make the assumption that respiration is occurring at the same rate in the light as it does in the dark.)

Another way to say the same thing is that the steady state rate (consistent rate) of oxygen evolution with the light on minus the separately measured negative respiration rate (sample was in the dark and should have a negative rate of oxygen evolution) is the "true" rate of photosynthesis. (Subtracting a negative gives a positive = you are adding the absolute value of the respiration rate to the measured photosynthetic rate; your measured photosynthetic rate is lower than the true rate).

If this is not clear, you may want to discuss it as a class before the end of the period. You will need to report "true" or "corrected" rates of photosynthesis in your lab reports.

Photosynthesis Lab Report

Refer to "How to Write a Lab Report" in the appendix of the lab manual for general guidance on writing the report. It must be typed.

Be sure to address the issues highlighted in the lab manual and by your instructor in the appropriate sections of your lab report. Include the following :

1. The Results section must include 2 different graphs:

- Plot the results from Part I as the true rate of photosynthesis (Y axis) versus relative light intensity (X axis).
- Plot the results from Part II, **Wavelength and Photosynthesis**. This plot will show a crude "action spectrum": the true rate of photosynthesis (Y axis) versus wavelength (X axis). The approximate wavelengths to use for each broad band filter (which transmit more than one wavelength) are:
Red: 660-760nm Blue: 350-450nm Green: 460-560nm

2. Discussion should address these issues:

How light intensity and wavelength affect the rate of photosynthesis, as supported by your data.

What conclusions can you make regarding the visible color of a pigment and the color of light it absorbs?